

vtech[®]

Instruction Manual

Bubble Time Turtle



VTech understands that a child's needs and abilities change as they grow and with that in mind we develop our toys to teach and entertain at just the right level...

vtech Baby

Toys that will stimulate their interest in different textures, sounds and colours

I am...

...responding to colours, sounds and textures

...understanding cause and effect

...learning to touch, reach, grasp, sit-up, crawl and toddle

Birth-36 months



Pre-School

Interactive toys to develop their imagination and encourage language development

I want...

...to get ready for school by starting to learn the alphabet and counting

...my learning to be as fun, easy and exciting as can be

...to show my creativity with drawing and music so my whole brain develops

3-6 years



Electronic Learning Computers

Cool, aspirational and inspiring computers for curriculum related learning

I need...

...challenging activities that can keep pace with my growing mind

...intelligent technology that adapts to my level of learning

...National Curriculum based content to support what I'm learning at school

4-10 years



To learn more about this and other VTech® products, visit www.vtech.co.uk

INTRODUCTION

Pop some bubbles with the **Bubble Time Turtle** by **VTech®**! This cute turtle magically releases bubbles in time with the music and sounds. Clown fish and light up starfish buttons introduce the sea animals and play sing-along songs and melodies. There are two strong suction cups on the back of the turtle allowing it to be easily attached to the side of the bath or bathroom wall. Let's pop, pop, pop some bubbles!



Clown Fish Button

Starfish Button

On/Off Button



Bubble Solution

INCLUDED IN THE PACKAGE

- **Bubble Time Turtle**
- Bubble Solution
- Quick Start Guide

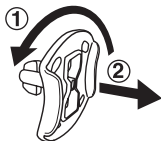
WARNING

All packing materials such as tape, plastic sheets, packaging locks, removable tags, cable ties, cords and packaging screws are not part of this toy, and should be discarded for your child's safety.

NOTE

Please keep this Instruction Manual as it contains important information.

Unlock the Packaging Locks:



- ① Rotate the packaging locks 90 degrees anticlockwise.
- ② Pull out the packaging locks and discard.

WARNINGS:

- Batteries must be changed by an adult.
- We do not recommend submerging the unit in the water. If the unit does get submerged in the water, please dry the unit completely before adding the bubble solution.
- To prevent drowning, never leave a child unattended in the bath.
- Use a thermometer to check the temperature of the water before sitting a child in the bath. Children have very sensitive skin and can burn easily if the water is too hot.
- For best results, use only high quality bubble solution.
- Do not drink the bubble solution.

- In case of eye contact, immediately rinse the eye with clean water.
- Please check the suction cups periodically as they may detach after prolonged use.
- Use caution when handling the unit when the reservoir is full of bubble solution, the bubble solution can spill easily.
- When the unit will not be used for an extended period of time, empty the bubble solution from the reservoir and wipe the unit clean with a damp cloth.
- Children should not play with the suction cups when the unit is fastened to the wall as the unit may detach and cause injuries.
- Do not clean the bubble wand with cleaning products. Cleaners may have a negative impact on the bubble effect.
- Do not touch the bubble wand when the bubble motor is turned on.
- This product may contain inactive ingredients, which can cause allergic reactions or other problems. Talk to your doctor for more details.

This electronic toy is intended for use on the side of the bath and is waterproof when used as intended. Water cannot enter the electronics if the battery compartment door is locked correctly. The design is verified by submerging the toy underwater to a depth of 15cm for 30 minutes. There will be a reduction in acoustic performance when the toy is submerged in water. The **Bubble Time Turtle** will not be able to form bubbles submerged and is designed to go on the wall of the bath.

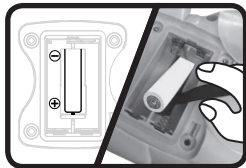
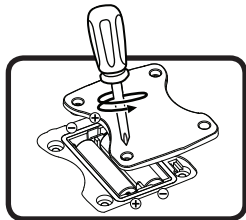
Adult supervision needed.

WARNING: Bubble Solution - Not suitable for children under 36 months. Choking hazard. There is aluminium foil under the bottle top. Please remove all of the aluminium foil before using the bubble solution and discard it safely. Adult assembly required. Bubble mixture to be used under adult supervision.

GETTING STARTED

BATTERY REMOVAL AND INSTALLATION

1. Make sure the unit is turned **OFF**.
2. Locate the battery cover on the back of the unit. Use a screwdriver to loosen the screw and then open the battery cover.
3. If used batteries are present, remove these batteries from the unit by pulling up on one end of each battery. Remove the third old battery on the bottom by pulling up the strip of cloth.
4. Install 3 new AA batteries following the diagram inside the battery box. (For best performance, alkaline batteries or fully charged Ni-MH rechargeable batteries are recommended).
5. Replace the battery cover and tighten the screw to secure.



WARNING:

Adult assembly required for battery installation.
Keep batteries out of reach of children.

IMPORTANT: BATTERY INFORMATION

- Insert batteries with the correct polarity (+ and -).
- Do not mix old and new batteries.
- Do not mix alkaline, standard (carbon-zinc) or rechargeable batteries.
- Only batteries of the same or equivalent type as recommended are to be used.
- Do not short-circuit the supply terminals.

- Remove batteries during long periods of non-use.
- Remove exhausted batteries from the toy.
- Dispose of batteries safely. Do not dispose of batteries in fire.

RECHARGEABLE BATTERIES

- Remove rechargeable batteries (if removable) from toy before charging.
- Rechargeable batteries are only to be charged under adult supervision.
- Do not charge non-rechargeable batteries.

Disposal of batteries and product



The crossed-out wheellie bin symbols on products and batteries, or on their respective packaging, indicates they must not be disposed of in domestic waste as they contain substances that can be damaging to the environment and human health.

The chemical symbols Hg, Cd or Pb, where marked, indicate that the battery contains more than the specified value of mercury (Hg), cadmium (Cd) or lead (Pb) set out in the Batteries and Accumulators Regulation.



The solid bar indicates that the product was placed on the market after 13th August, 2005.

Help protect the environment by disposing of your product or batteries responsibly.

VTech® cares for the planet.

Care for the environment and give your toy a second life by disposing of it at a small electricals collection point so all its materials can be recycled.

In the UK:

Visit www.recyclenow.com to see a list of collection points near you.

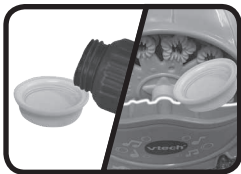
In Australia & New Zealand:

Check with your local council for kerbside collections.

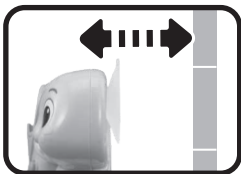
PRODUCT ASSEMBLY

With the **VTech® Bubble Time Turtle**, safety comes first. To ensure your child's safety, adult assembly is required.

1. Open the bottle and carefully tear off the aluminium foil. Discard the foil appropriately.
2. Carefully fill the bubble reservoir with bubble solution. Do not overfill the bubble solution beyond the white line shown in the image. Filling the bottle cap up four times will fill the reservoir to the top. Do not dilute the bubble solution. Using concentrated bubble solution will produce the best bubbles.



3. Choose a surface on the wall surrounding the bath where the suction cup support unit can be mounted securely. The area should be clean and dry before suctioning the unit to the wall. For better suction, we suggest wetting the suction cups before attaching them to the wall. Press the suction cups onto the wall to secure the suction cup support unit. Once the unit is attached to the wall, test the strength of the suction by pulling gently on the unit. The suction cups may not stick properly to textured tiles. We recommend that the unit be



removed from the wall after each use as the strength of the suction cups cannot support prolonged use.

4. To remove the unit from the wall, pull the tab on the suction cup and pull the turtle gently.



WARNING:

To prevent the risk of injuries, do not attach the VTech® Bubble Time Turtle any higher than a child's head height when sitting in the bath.

PRODUCT FEATURES

1. On/Off Button

To turn the unit **On**, press the **On/Off Button**. You will hear a song, 2 phrases and sounds. To turn the unit **Off**, press the **On/Off Button** again. The unit will shut down after playing a short melody.



2. Automatic Shut-Off

To preserve battery life, the **Bubble Time Turtle** will automatically shut off after approximately 30 seconds without input. The unit can be turned on again by pressing the clown fish button, the starfish button or the on/off button.

NOTE

This product is in try-me mode in the packaging. After opening the package, take the product out to proceed with normal play.

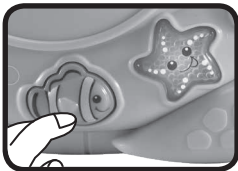
NOTE

If the unit powers down or if the light fades out during play, please install a new set of batteries.

ACTIVITIES

1. Clown Fish Button & Starfish Button

Press the **Clown Fish Button** and the **Starfish Button** to learn about clown fish & starfish and hear sing-along songs, fun sounds and melodies.



2. Bubble Machine

Turtle will make lots of bubbles while he plays sing-along songs, fun sounds and melodies.



MELODIES

1. Alphabet Song
2. A-Tisket, A-Tasket

3. Bingo
4. Entertainer
5. Humpty Dumpty
6. Looby Loo
7. Mulberry Bush
8. Toyland
9. Wheels on the Bus
10. Yankee Doodle
11. Girls and Boys Come Out to Play
12. Skip to My Lou

SONG LYRICS

Song 1

Can you pop my bubbles?
Bubbles are floating everywhere,
pop, pop, pop, pop, pop, pop.

Song 2

Bubbles are floating everywhere,
pop, pop, pop, pop, pop, pop.

Song 3

Little clownfish,
Swim, swim, swim.
Won't you swim with me today!

Song 4

Starfish, starfish, you are my friend.
Let's giggle and play together today.
Starfish, starfish lets have some fun,
in the bath with our friends today!

CARE & MAINTENANCE

1. Remove the unit from the wall after each use.
2. Keep the unit clean by wiping it with a slightly damp cloth.
3. Keep the unit out of direct sunlight and away from any direct heat source.
4. To prevent a build up of residue in the bubble reservoir, rinse the bubble reservoir with warm water.
5. Make sure to dry all the elements of the unit before storing.
6. Remove the batteries when the unit will not be in use for an extended period of time.
7. Do not drop the unit on hard surfaces.

TROUBLESHOOTING

If for some reason the program/activity stops working or malfunctions, please follow these steps:

1. Please turn the unit **Off**.
2. Interrupt the power supply by removing the batteries.
3. Let the unit stand for a few minutes, then replace the batteries.
4. Turn the unit **On**. The unit should now be ready to play with again.
5. If the product still does not work, install a brand new set of batteries.

If the problem persists, please contact our Consumer Services Department and a service representative will be happy to help.

CONSUMER SERVICES

Creating and developing **VTech®** products is accompanied by a responsibility that we at **VTech®** take very seriously. We make every effort to ensure the accuracy of the information, which forms the value of our products. However, errors sometimes can occur. It is important for you to know that we stand behind our products and encourage you to call our Consumer Services Department with any problems and/or suggestions that you might have. A service representative will be happy to help you.

UK Customers:

Phone: 0330 678 0149 (from UK) or +44 330 678 0149 (outside UK)
Website: www.vtech.co.uk/support

Australian Customers:

Phone: 1800 862 155
Website: support.vtech.com.au

NZ Customers:

Phone: 0800 400 785
Website: support.vtech.com.au

PRODUCT WARRANTY/ CONSUMER GUARANTEES

UK Customers:

Read our complete warranty policy online at vtech.co.uk/warranty.

Australian Customers:

**VTECH ELECTRONICS (AUSTRALIA) PTY LIMITED –
CONSUMER GUARANTEES**

Under the Australian Consumer Law, a number of consumer guarantees apply to goods and services supplied by VTech Electronics (Australia) Pty Limited. Please refer to vtech.com.au/consumerguarantees for further information

**Visit our website for more
information about our products,
downloads, resources and more.**

www.vtech.co.uk
www.vtech.com.au

